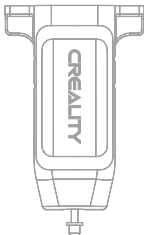


CR①ouch Manual

AUTO BED LEVELING SENSOR FOR 3D PRINTER

Apply to 32-bit motherboards



Packing List



CR Touch

Note: During CR Touch installation, remember to pull out the Z endstop switch for auto leveling. Otherwise it won't work.



Connectors



Tie



Ender-3 | Ender-3s | CR-10
Ender-3Pro | Ender-5/5S/5Pro



Ender-3 MAX

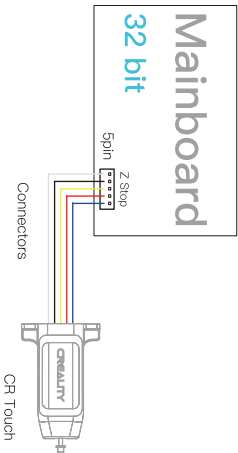


Ender-3 V2



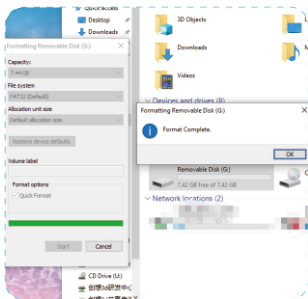
M3*8 2Pcs



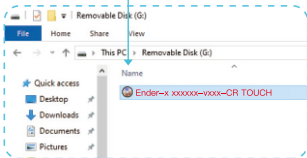
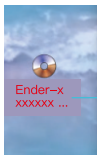


Application:

Ender-3 Series | Ender-5/5S/5Pro
CR-10 | Ender-6 (No rack)



1. Double-click to open computer-right-click to format SD card.



Note: Every machine has different firmware files.

File download website:

<https://www.creality.com/download/>

2. Copy the firmware to the SD card.

Note: the SD card can only hold one firmware file.



3. Insert SD card.



4. Insert the power cord and press the switch.



Note: Every machine has its own operation interface.

5. Wait for the firmware to complete upgrade. (about 10 seconds).

Install CR Touch



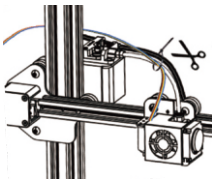
1. Insert connectors into 5 Pin Port.



2. Install CR Touch on the rack with 2 M3*6 screws.

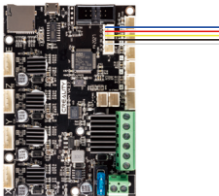


3. Loosen all fan cover screws, install the CR Touch rack on the corresponding position with 2 M3*8 screws.



4. Tie the CR Touch cable together with other printer cables like the above picture shown.

Circuit Wiring



Note: Unplug the cable from Z endstop/limit switch.

Platform Adjustment

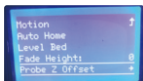
Figure3



0.2mm
A4 paper

Rotate the knob until the distance between the nozzle and the printer bed is about 0.2mm (as a sheet of A4 paper).





1. Prepare → Auto home, and wait until it stops.



2. Select “Control” . 3. Select “Bed leveling” .



4. Select “Level-Bed” . 5. leveling 9 points.



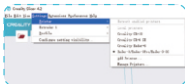
6. 9 points leveling completed.



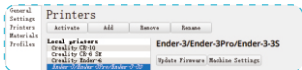
7. automatic leveling is completed, the machine is ready.

Note: Every machine has its own operation interface.

Software Settings



1. Open Slicer. 2. Settings → Printer → Manage Printers.



3. Machine Settings.

Machine Settings

Printer

Printer Settings

X (Width) mm

Y (Depth) mm

Z (Height) mm

Build plate shape

Origin at center ☐

Heated bed ☒

G-code flavor

Start G-code

```
M201 E500.00 F500.00 Z100.00 E500
M203 E500.00 F500.00 Z10.00 E50.0
M204 F500.00 E1000.00 T500.00 ;Se
M205 E8.00 F8.00 Z0.40 E5.00 ;Set
M220 S100 ;Reset Feedrate
M221 S100 ;Reset Flowrate

G28
G29 ;None
```

Extruder 1

Printhead Settings

X min mm

Y min mm

X max mm

Y max mm

Gantry Height mm

Number of Extruders

End G-code

```
G91 ;Relative positioning
M83 ;Relative extrusion
```

4. Change "G28" to "G28G29" .

MADE IN CHINA



SHENZHEN CREALITY 3D TECHNOLOGY CO., LTD.

Add : 18F, JinXiuHongDu Building, Meilong Blvd.,
Longhua Dist., Shenzhen, China 518131

Official Website: www.creality.com Tel: +86 755-8523 4565

E-mail: info@creality.com cs@creality.com